

Proxy Hunter Tutorial With Pictures

We usually get large numbers of proxies from websites or forums. We are sharing other people's achievement. Do you want to find proxies by yourself? If you do, Proxy Hunter can help you as long as you have enough patience and online time.

Proxy Hunter is a classical and powerful tool for scanning and verifying proxies. Download it from <http://www.jtpfxp.net/files/phunt31b1.zip>, if you don't have it.

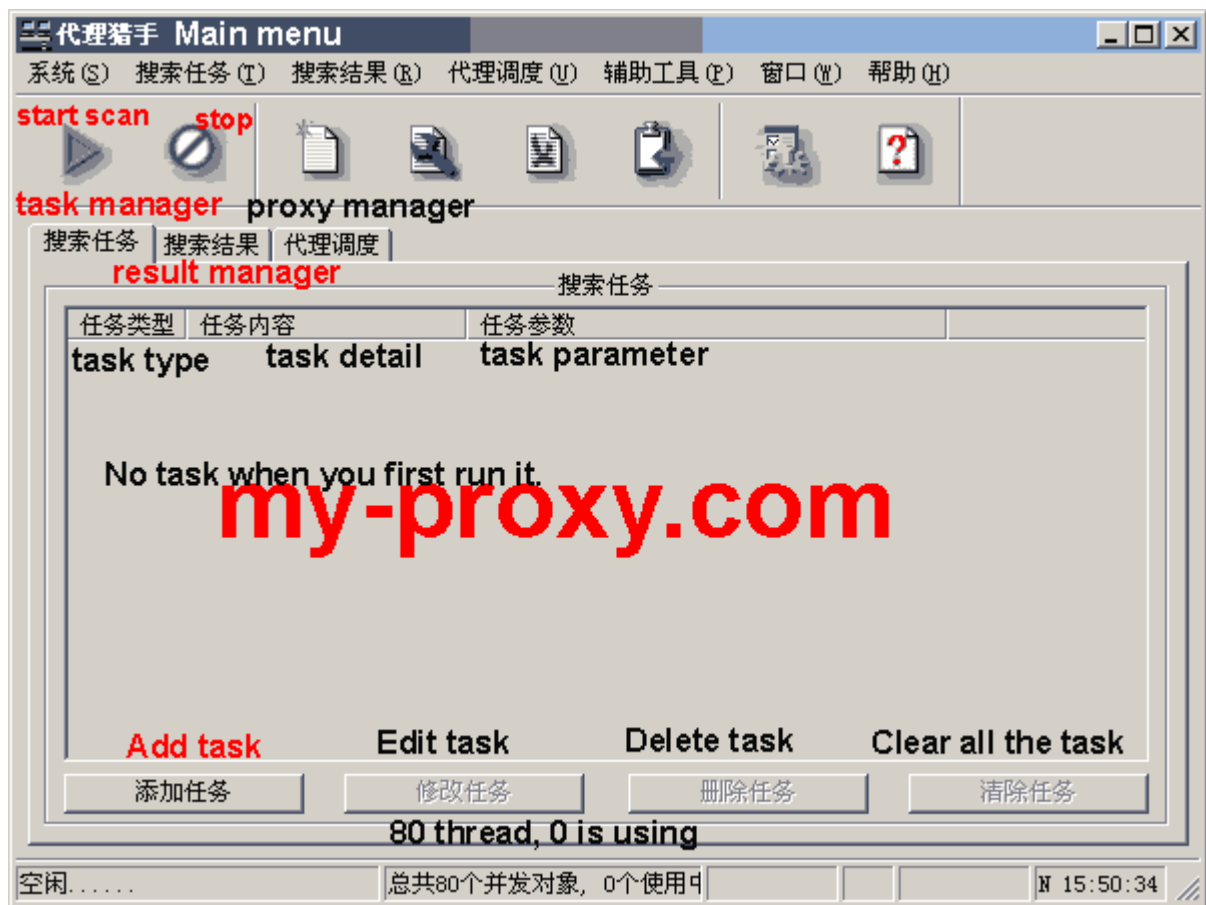
But our problem is that it is Chinese software and does not have an English version. Don't worry about the interface. I will give you full guidance. We will focus on the scan function, which is the specialty of Proxy Hunter. You can test the found proxies with other tools such as AD or proxy checker.

Now let us begin. After the English install process, you can start the software and a warning dialog will show as below.



Proxy Hunter Tutorial With Pictures

You can see the main menu after pressing "Enter" button.



Proxy Hunter Tutorial With Pictures

Press the "Add task" button to add a new scan task.

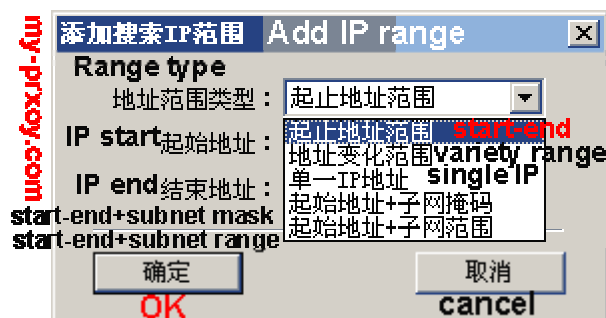


Choose "IP range scan" for task type and press "next". You will see this dialog "Add scan task 2".



Proxy Hunter Tutorial With Pictures

Add IP ranges to scan using "add" button. You will see this dialog "Add IP range".



Choose "start-end" in the "range type" and enter IP addresses in the "IP start" and "IP end". For example, you can use "IP start=144.92.0.0 IP end=144.92.255.255" to scan free proxies in US Wisconsin University. Do not know the IP range, please search it in <http://www.my-proxy.com>.

Press "next" in "Add scan task 2" after adding the IP range you want to scan. Then you will see the "Add scan task 3" dialog.



Proxy Hunter Tutorial With Pictures

Add ports to scan using "add" button. You will see this dialog "Add ports".



Choose the "single port" and fill in the port. Press "OK" after doing that. You will have to use this dialog several times to add these commonly used ports: 8080, 80, 3128, 1080. The more ports you add the more proxies you will find, but too many ports will make the scan process lengthy.

Press "finish" in "Add scan task 3" and you will return to the "Main menu". Now you can press the "start scan" button and go to sleep:)

Next morning you will find that you have got a lot of proxies in the "Result manager" page.



Proxy Hunter Tutorial With Pictures

Now you can output the result and test it with other tools. And I should tell you that a majority of the result is trashy. The picture above also shows the test result by Proxy Hunter.

Tip: You can add the max thread number to speed up your searching in the "Setting menu".

